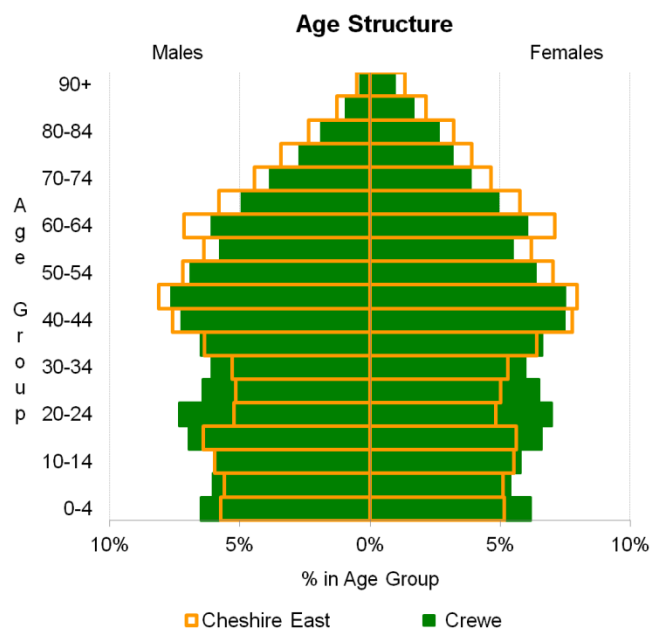
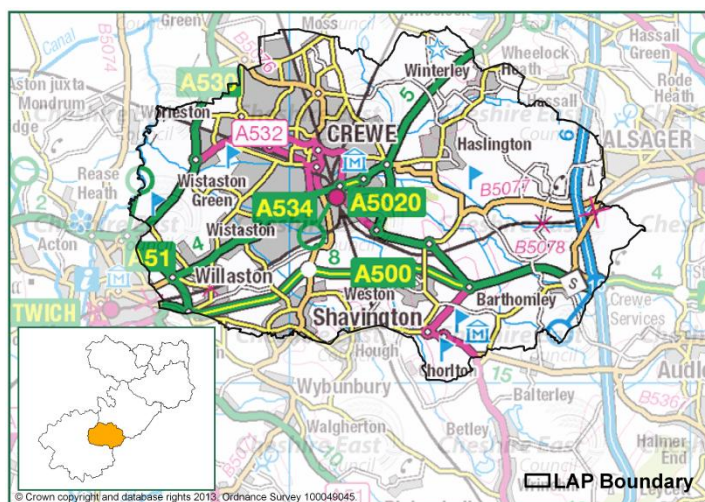


Local Area Partnership Profile

Crewe



Summary

Area (hectares)	7,648 (6.6% of the CE total)
Households	37,100 (22.3% of the CE total)
Vacant households	1,400 or 3.8% (4.1% in CE)
Population	85,600 (23.1% of the CE total)
Children (0-15)	16,400 or 19.2% (17.8% in CE)
Working age (16-64)	55,700 or 65.1% (63.0% in CE)
Pensionable age (65+)	13,600 or 15.9% (19.3% in CE)
Population Density	11.2 per Ha (3.2 in CE)

Research and Consultation

Performance and Partnerships

Cheshire East Council

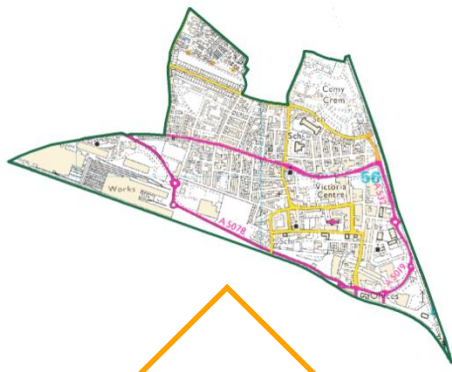
randc@cheshireeast.gov.uk

01270 371419

Produced: November 2013

The contents of this profile were agreed between LAP Managers and the Research and Consultation team. Whilst every effort has been made to provide accurate data, some figures are estimates due to complications with the disaggregation of data for statistical areas to LAP areas.

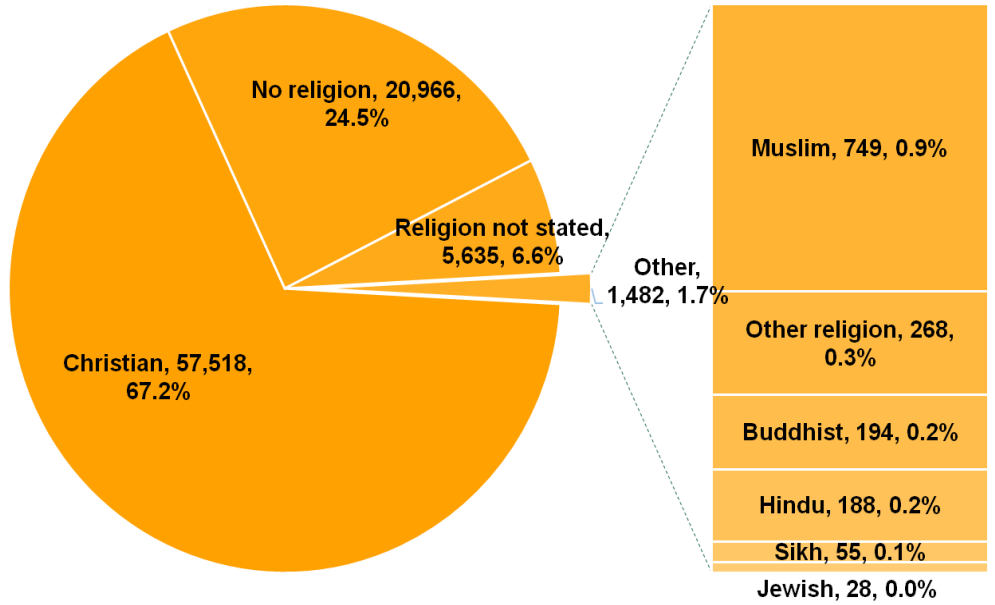
If you require this document in large print, Braille, or in another language, please contact Customer Services on 0300 123 5500



Between 2001 and 2011 Crewe has grown by 5,144 residents.

Roughly the same size as Crewe Central ward

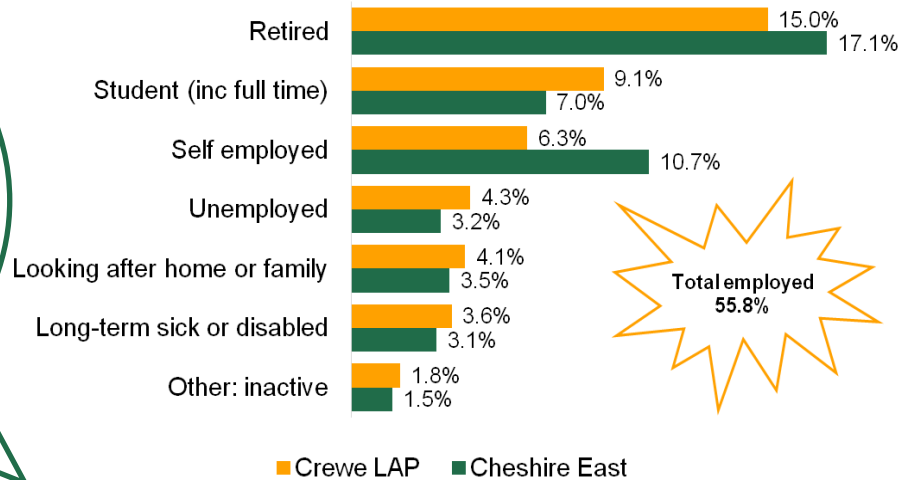
Religion



Priorities

When asked what most needed improving, the top three answers were; activities for teenagers (43% LAP, 47% CE), job prospects (43% LAP, 38% CE) and traffic levels (37% LAP, 40% CE).

Economic status



Ethnicity	Percentage
White other	6%
Asian	2%
Mixed	1%
Black	1%
Other	<1%

Ethnicity

90% of residents were White British
A decrease of 6 percentage points from 2001

Quartile is based on the area's national quartile rank



+/- indicates whether a +ve (higher) or -ve score is better

Table 1: Health indicators from JSNA - LAP rank is out of 7, with 1 being the worst (public health priorities in brackets)

+/-	Indicator	LAP Rank	LAP figure	LAP Quart.	CE figure	CE Quart.
-ve	Differences in life expectancy (years) at birth - males (0.2)	1 (worst)				
-ve	Differences in life expectancy (years) at birth - females (0.2)	1 (worst)				
-ve	Under 18 conceptions, rate per 1,000 (2.4)	1 (worst)	49.8		32.2	
+ve	Proportion (%) of babies breastfed (2.2)	1 (worst)	46.3%		68.1%	
-ve	Proportion (%) of women smoking at time of delivery (2.3)	1 (worst)	25.1%		19.8%	
-ve	Tooth decay proportion (%) in children aged five PH 4.2	5	20.2%		22.3%	
-ve	Emergency Gastroenteritis Admissions in under 5's, rate per 100,000	2	1927.0		1700.8	
-ve	Proportion (%) of excess weight in 4-5 year olds (2.6i)	2	22.1%		20.5%	
-ve	Proportion (%) of excess weight in 10-11 year olds (2.6ii)	1 (worst)	36.3%		31.5%	
-ve	Alcohol specific hospital admissions in under 18's, rate per 100,000	2	118.2		95.1	
-ve	Alcohol related hospital admissions, rate per 100,000 (2.18)	1 (worst)	2192.6		1832.0	
-ve	Mortality from Liver Disease for persons under 75, per 100,000 (4.6)	1 (worst)	14.8		9.5	
-ve	Smoking prevalence (%), adults aged 16+ (2.14)	1 (worst)	23.2%		17.4%	
-ve	Domestic Abuse, rate per 1,000 of the population (1.11)	1 (worst)	2.3		1.3	
-ve	Proportion of households in fuel poverty - new LIHC method (1.17)	1 (worst)	13.3%		11.6%	
-ve	Excess risk (%) of winter deaths (4.15)	6	17.8%		19.7%	
-ve	Hospital Admissions as a result of self-harm, per 100,000 (2.10)	2	343.9		283.6	
-ve	Proportion (%) screened with diabetes (2.21 vii)	1 (worst)	5.96%		5.60%	
+ve	Proportion (%) of eligible people who receive an NHS Health Check (2.22)	3	8.8%		8.2%	
+ve	Proportion (%) of residents expected with dementia who are identified (4.16)	5	46.5%		45.4%	
+ve	Proportion (%) of eligible women screened for breast cancer (2.20i)	3	79.8%		80.9%	
+ve	Proportion (%) of eligible women screened for cervical cancer (2.20ii)	1 (worst)	77.8%		81.1%	
-ve	Mortality rate from all cancers for persons under 75, per 100,00 (4.5)	2				
+ve	End of Life - Proportion (%) of deaths occurring in usual place of residence	2	38.4%		40.8%	

Healthy Eating

Across Cheshire East, nearly half (47%) of respondents never ate fast food. In Crewe, the proportion was lower with around a third (36%) never eating fast food.

Additionally, four out of ten respondents (38%) ate deep fried foods cooked at home, the highest of proportion of any LAP and also higher than the Cheshire East average (32%).

Fear of crime

Some 15% of respondents felt unsafe when alone at night in their own home, the highest proportion of any LAP and higher than the Cheshire East average (11%). Half of respondents (49%) were worried about being a victim of crime (41% for CE), or having their home broken in to (45% for CE).

The Economy

A higher proportion (74%) of respondents in Crewe felt that the state of the local economy is bad compared to the Cheshire East average (66%).

Respondents from Crewe were also more likely to be very worried about suffering as a result of public sector cuts (34% LAP, 27% CE) and losing their home in the next 12 months (18% LAP, 10% CE).

Council satisfaction

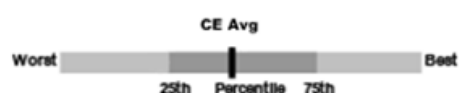
38% of respondents say they are satisfied with the council, the lowest of any LAP and below the Cheshire East average (44%). When asked what influenced this, whether the council provides value for money was the number one factor, with two out of three (65%) respondents saying this had a strong or very strong influence.



Key:

- Better than the Cheshire East average
- Figures are factual statements - better or worse is not relevant
- Worse than the Cheshire East average

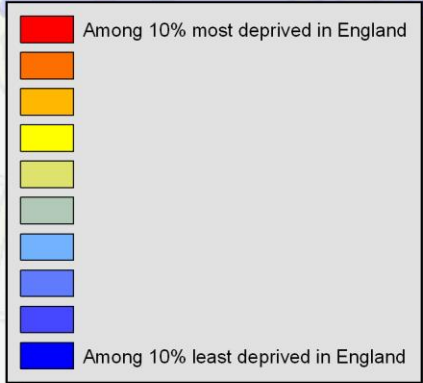
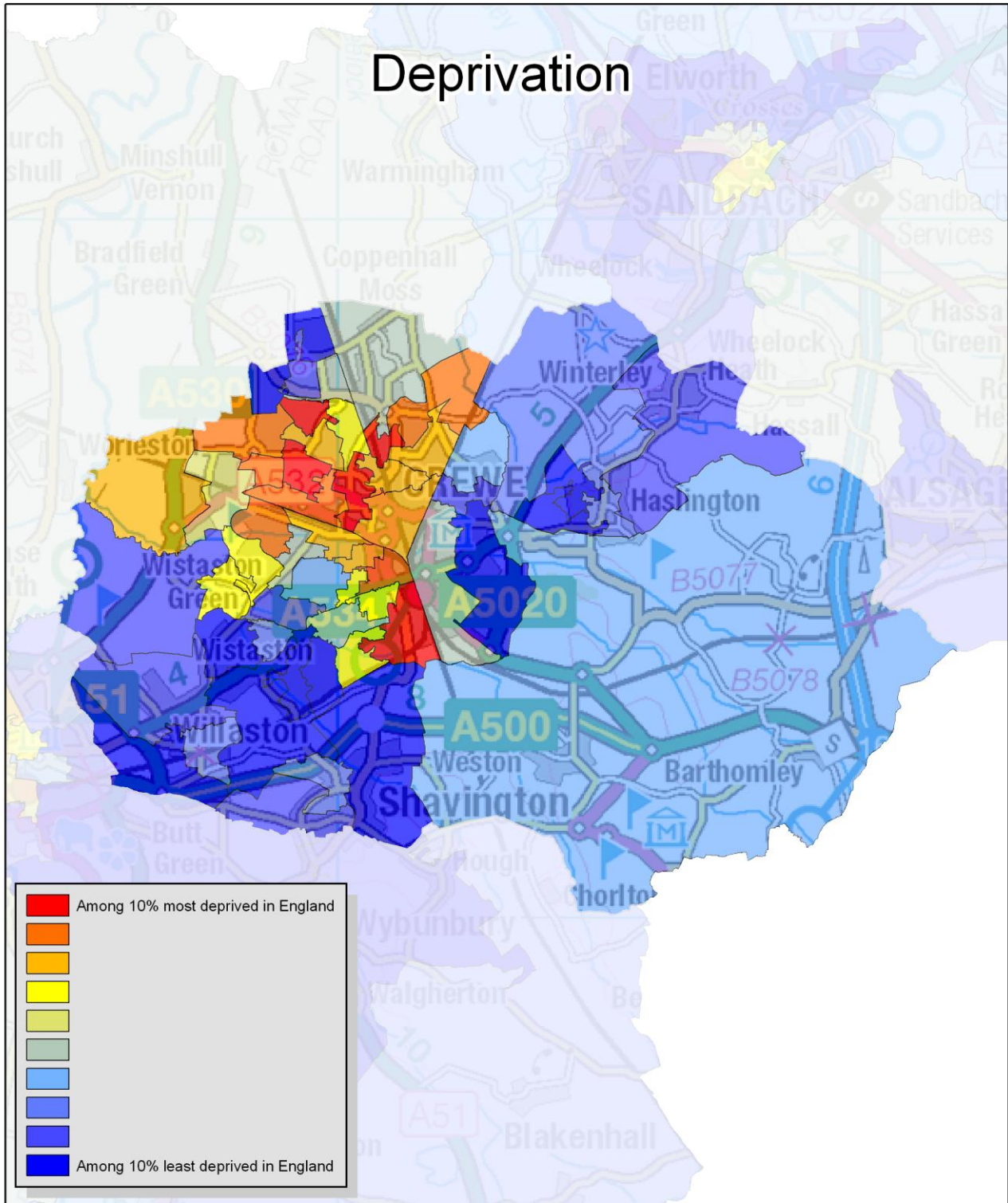
Chart Key:



Indicator	Rate / Value	CE Avg	CE 'Worst'	Cheshire East Range	CE 'Best'
Education					
KS4 - (GCSE + equiv) achiev. 5+ A* to C	80.1%	83.7%	61.9%		100.0%
KS4 - achiev. 5+ A* to C inc Eng & Maths	51.5%	61.8%	37.7%		93.5%
KS5 - (A-level + equiv) avg points per entry	204.7	213.9	141.4		233.0
Crime					
Crimes - rate per 1,000 population	69.9	50.1	194.0		20
Burglary - rate per 1,000 population	6.9	5.7	10.7		2.7
Robbery - rate per 1,000 population	0.3	0.2	1.1		0.0
Vehicle - rate per 1,000 population	5.5	4.3	12.2		0.6
Violent - rate per 1,000 population	16.4	12.2	37.0		3.1
Other - rate per 1,000 population	40.9	27.7	140.3		6.9
Population					
Proportion of children (0-15)	19.2%	17.8%	11.7%		23.1%
Proportion of working age (16-64)	65.1%	63.0%	54.8%		70.5%
Proportion of pensionable age (65+)	15.9%	19.3%	10.7%		28.6%
Economic					
Job Seekers claimant rate (JSA)	3.2%	2.2%	5.9%		0.7%
Out-of-work benefit claimants rate	10.9%	8.1%	19.2%		2.9%
NEET rate	10.3%	5.7%	21.0%		0.0%
Average Household Income	£ 27,300	£ 32,600	£ 19,400		£ 52,500
Benefits - Council Tax claimants rate	18.7%	14.5%	36.7%		4.2%
Benefits - Housing Benefit claimants rate	15.5%	11.7%	36.5%		2.7%
Housing					
Average house prices (median)	£ 120,000	£ 170,000	£ 66,500		£ 484,000
Second homes	0.4%	0.6%	1.9%		0.1%
Properties empty for more than two years	0.4%	0.5%	4.1%		0.1%
Single occupier properties	33.3%	32.3%	19.0%		49.7%
Student properties	0.6%	0.2%	0.0%		2.3%
Health and care					
Residents with limiting disability/illness	17.8%	17.5%	23.0%		11.3%
Social care clients, rate per 100,000	2458	2685			
Clients receiving 'on going' services, rate per 100,000	1425	1443			
Carer with assessment, rate per 1,000 18+	6.2	9.9			
Residential/nursing care residents, rate per 1,000	4.0	5.1			
Over 65s helped to stay in their home, per 1,000 65+	89.0	78.3			

The best, worst and the Cheshire East range are based on ward data, or MSOA data where this is not available. The Cheshire East range is not available for some indicators due to the relatively small number of people affected in some areas.

Deprivation



1:75,000

Source: Overall Deprivation - English Indices of Deprivation (2010), Department for Communities and Local Government

The Ordnance Survey map data included is provided by this Authority in order to fulfil its public function.

Persons viewing this mapping should contact Ordnance Survey copyright for advice where they wish to licence Ordnance Survey map data for their own use.

This map is based upon Ordnance Survey material with the permission of Ordnance Survey on behalf of the Controller of Her Majesty's Stationery Office © Crown copyright. Unauthorised reproduction infringes Crown copyright and may lead to prosecution or civil proceedings. Cheshire East Council. 100049045 2010.