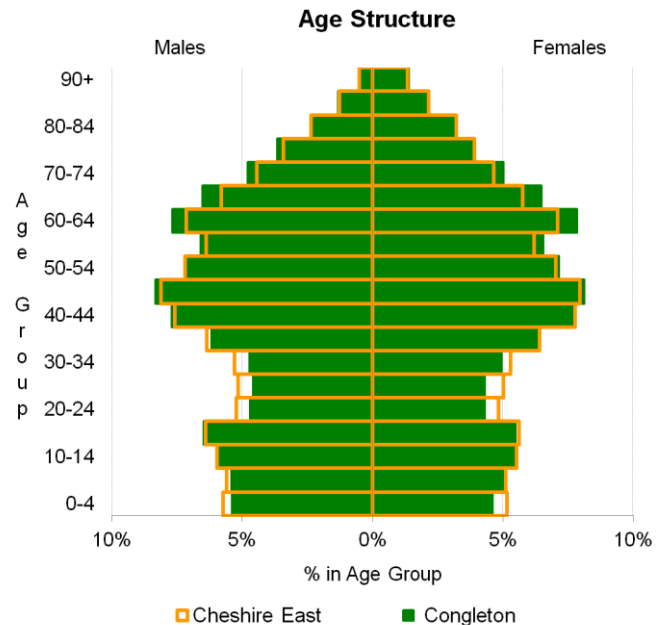
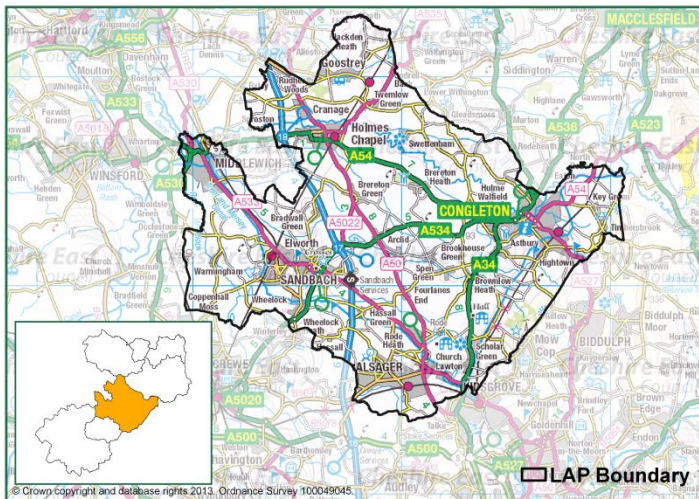


Local Area Partnership Profile

Congleton



Summary

Area (hectares)	21,099 (18.1% of the CE total)
Households	41,300 (24.8% of the CE total)
Vacant households	1,600 or 3.9% (4.1% in CE)
Population	92,000 (24.9% of the CE total)
Children (0-15)	15,800 or 17.2% (17.8% in CE)
Working age (16-64)	57,400 or 62.4% (63.0% in CE)
Pensionable age (65+)	18,700 or 20.3% (19.3% in CE)
Population Density	4.4 per Ha (3.2 in CE)

Research and Consultation

Performance and Partnerships

Cheshire East Council

randc@cheshireeast.gov.uk

01270 371419

Produced: November 2013

The contents of this profile were agreed between LAP Managers and the Research and Consultation team. Whilst every effort has been made to provide accurate data, some figures are estimates due to complications with the disaggregation of data for statistical areas to LAP areas.

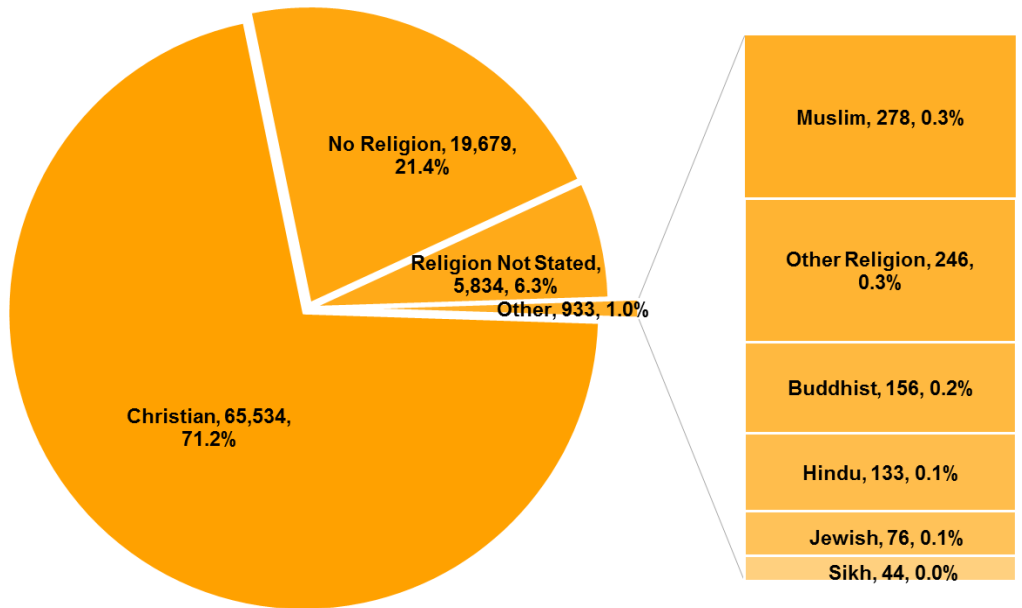
If you require this document in large print, Braille, or in another language, please contact Customer Services on 0300 123 5500



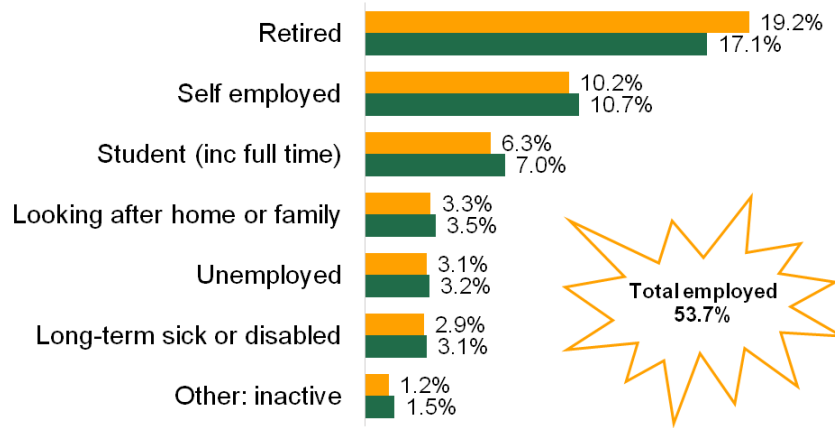
Between 2001 and 2011 Congleton has grown by 1,472 residents.

Roughly the same size as Brereton Parish

Religion



Economic status



Total employed 53.7%

Priorities

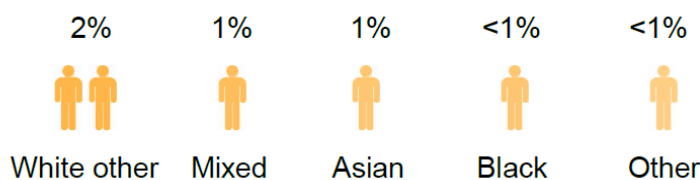
When asked what most needed improving, the top three answers were; activities for teenagers (52% LAP, 47% CE), traffic levels (41% LAP, 40% CE) and job prospects (38% LAP, 38% CE).

■ Congleton LAP ■ Cheshire East



Ethnicity

96% of residents were White British
A decrease of 1 percentage point from 2001



Quartile is based on the area's national quartile rank



+/- indicates whether a +ve (higher) or -ve score is better

Table 1: Health indicators from JSNA - LAP rank is out of 7, with 1 being the worst (public health priorities in brackets)

+/-	Indicator	LAP Rank	LAP figure	LAP Quart.	CE figure	CE Quart.
-ve	Differences in life expectancy (years) at birth - males (0.2)	3				
-ve	Differences in life expectancy (years) at birth - females (0.2)	2				
-ve	Under 18 conceptions, rate per 1,000 (2.4)	3	26.1		32.2	
+ve	Proportion (%) of babies breastfed (2.2)	2	60.8%		68.1%	
-ve	Proportion (%) of women smoking at time of delivery (2.3)	3	18.0%		19.8%	
-ve	Tooth decay proportion (%) in children aged five PH 4.2	4	23.5%		22.3%	
-ve	Emergency Gastroenteritis Admissions in under 5's, rate per 100,000	4	1532.5		1700.8	
-ve	Proportion (%) of excess weight in 4-5 year olds (2.6i)	1 (worst)	25.2%		20.5%	
-ve	Proportion (%) of excess weight in 10-11 year olds (2.6ii)	2	32.6%		31.5%	
-ve	Alcohol specific hospital admissions in under 18's, rate per 100,000	4	83.5		95.1	
-ve	Alcohol related hospital admissions, rate per 100,000 (2.18)	4	1707.3		1832.0	
-ve	Mortality from Liver Disease for persons under 75, per 100,000 (4.6)	2	10.2		9.5	
-ve	Smoking prevalence (%), adults aged 16+ (2.14)	3	15.0%		17.4%	
-ve	Domestic Abuse, rate per 1,000 of the population (1.11)	4	1.0		1.3	
-ve	Proportion of households in fuel poverty - new LIHC method (1.17)	7 (best)	10.2%		11.6%	
-ve	Excess risk (%) of winter deaths (4.15)	7 (best)	17.4%		19.7%	
-ve	Hospital Admissions as a result of self-harm, per 100,000 (2.10)	3	282.4		283.6	
-ve	Proportion (%) screened with diabetes (2.21 vii)	2	5.78%		5.60%	
+ve	Proportion (%) of eligible people who receive an NHS Health Check (2.22)	1 (worst)	5.8%		8.2%	
+ve	Proportion (%) of residents expected with dementia who are identified (4.16)	1 (worst)	39.8%		45.4%	
+ve	Proportion (%) of eligible women screened for breast cancer (2.20i)	7 (best)	83.7%		80.9%	
+ve	Proportion (%) of eligible women screened for cervical cancer (2.20ii)	5	83.1%		81.1%	
-ve	Mortality rate from all cancers for persons under 75, per 100,00 (4.5)	3				
+ve	End of Life - Proportion (%) of deaths occurring in usual place of residence	5	41.6%		40.8%	

Highways

Those from Congleton LAP were on the whole less satisfied with their local cycling facilities including the location of cycle routes (24% compared to 30% CE avg.) and the condition of cycle routes (29% compared to 37% CEC avg.). However, they were more satisfied with cycle training (20%, compared to CE avg. 14%).

Fear of crime

Just over a quarter of respondents in Congleton LAP (26%) felt that levels of crime had increased during the last two years, one of the highest levels of the LAPs and higher than the Cheshire East average (20%).

However, they were also more likely to feel that their fear of crime has remained about the same (73%) compared to Cheshire East overall (69%).

Council satisfaction

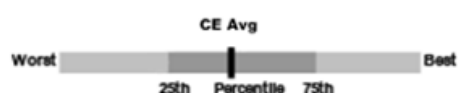
Disagreement that the council acts on the concerns of local residents was more prevalent in Congleton LAP (44%) compared to Cheshire East (39%).

Over half of the respondents from Congleton LAP (51%) disagreed that Cheshire East Council can be trusted to spend money wisely.

Key:

- Better than the Cheshire East average
- Figures are factual statements - better or worse is not relevant
- Worse than the Cheshire East average

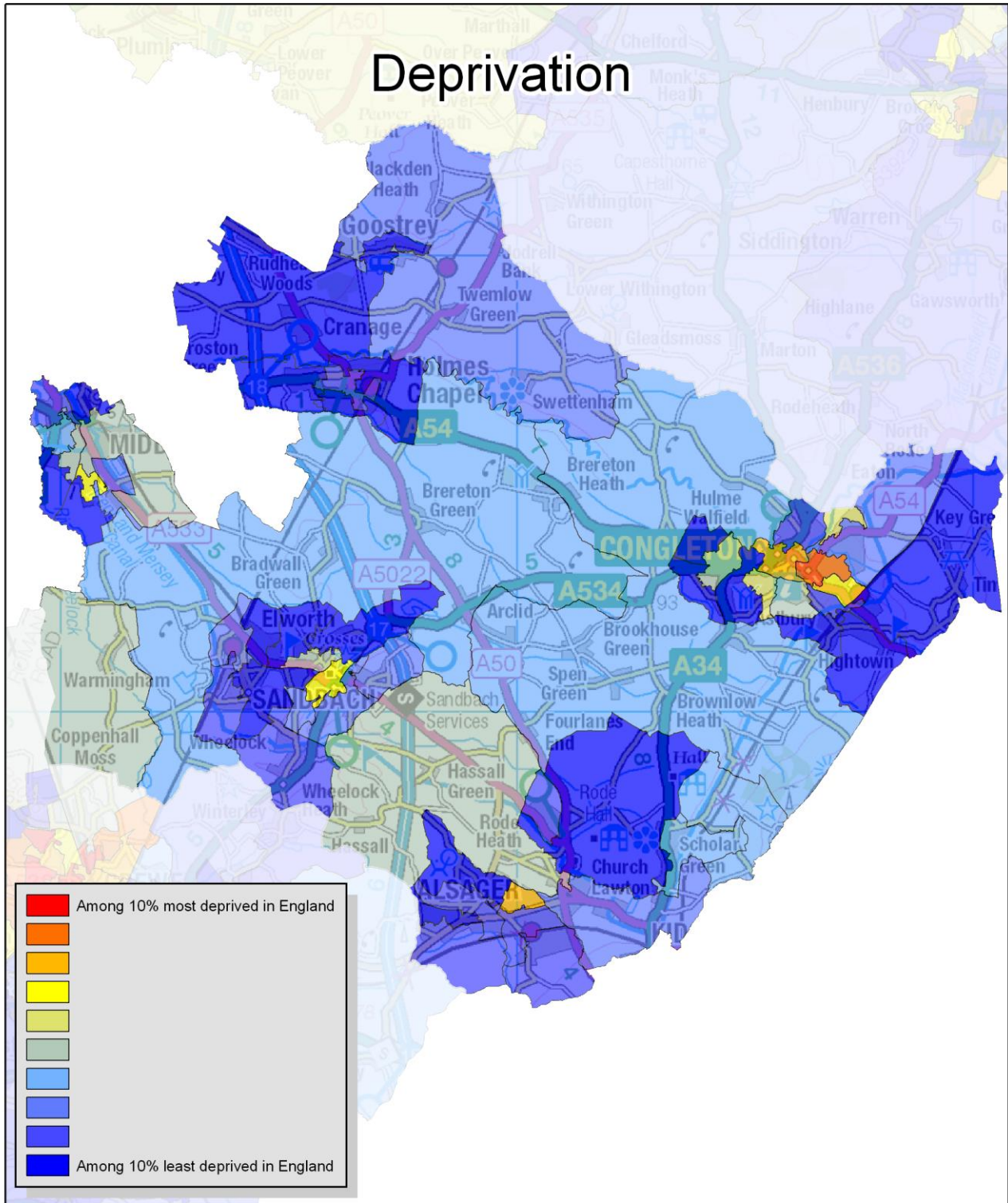
Chart Key:



Indicator	Rate / Value	CE Avg	CE 'Worst'	Cheshire East Range	CE 'Best'
Education					
KS4 - (GCSE + equiv) achiev. 5+ A* to C	86.0%	83.7%	61.9%		100.0%
KS4 - achiev. 5+ A* to C inc Eng & Maths	65.7%	61.8%	37.7%		93.5%
KS5 - (A-level + equiv) avg points per entry	211.9	213.9	141.4		233.0
Crime					
Crimes - rate per 1,000 population	42.6	50.1	194.0		20
Burglary - rate per 1,000 population	5.3	5.7	10.7		2.7
Robbery - rate per 1,000 population	0.1	0.2	1.1		0.0
Vehicle - rate per 1,000 population	3.7	4.3	12.2		0.6
Violent - rate per 1,000 population	10.4	12.2	37.0		3.1
Other - rate per 1,000 population	23.1	27.7	140.3		6.9
Population					
Proportion of children (0-15)	17.2%	17.8%	11.7%		23.1%
Proportion of working age (16-64)	62.4%	63.0%	54.8%		70.5%
Proportion of pensionable age (65+)	20.3%	19.3%	10.7%		28.6%
Economic					
Job Seekers claimant rate (JSA)	1.9%	2.2%	5.9%		0.7%
Out-of-work benefit claimants rate	7.4%	8.1%	19.2%		2.9%
NEET rate	4.0%	5.7%	21.0%		0.0%
Average Household Income	£ 33,500	£ 32,600	£ 19,400		£ 52,500
Benefits - Council Tax claimants rate	14.1%	14.5%	36.7%		4.2%
Benefits - Housing Benefit claimants rate	10.6%	11.7%	36.5%		2.7%
Housing					
Average house prices (median)	£ 158,000	£ 170,000	£ 66,500		£ 484,000
Second homes	0.5%	0.6%	1.9%		0.1%
Properties empty for more than two years	0.5%	0.5%	4.1%		0.1%
Single occupier properties	31.1%	32.3%	19.0%		49.7%
Student properties	0.1%	0.2%	0.0%		2.3%
Health and care					
Residents with limiting disability/illness	18.1%	17.5%	23.0%		11.3%
Social care clients, rate per 100,000	2672	2685			
Clients receiving 'on going' services, rate per 100,000	1432	1443			
Carer with assessment, rate per 1,000 18+	10.3	9.9			
Residential/nursing care residents, rate per 1,000	4.4	5.1			
Over 65s helped to stay in their home, per 1,000 65+	74.4	78.3			

The best, worst and the Cheshire East range are based on ward data, or MSOA data where this is not available. The Cheshire East range is not available for some indicators due to the relatively small number of people affected in some areas.

Deprivation



1:115,000

Source: Overall Deprivation - English Indices of Deprivation (2010), Department for Communities and Local Government

The Ordnance Survey map data included is provided by this Authority in order to fulfil its public function.

Persons viewing this mapping should contact Ordnance Survey copyright for advice where they wish to licence Ordnance Survey map data for their own use.

This map is based upon Ordnance Survey material with the permission of Ordnance Survey on behalf of the Controller of Her Majesty's Stationery Office © Crown copyright. Unauthorised reproduction infringes Crown copyright and may lead to prosecution or civil proceedings. Cheshire East Council. 100049045 2010.